

Notes: Minutes of the 40th Meeting of the Maules Creek Coal Community Consultative Committee
Held at Boggabri Golf Club at 2:00 pm.

Wednesday 22 February 2023

Members Present: Elizabeth O'Hara (EOH) – Community Representative, Emma Bulkeley (EB) – WHC, Jackie Scott (JS) – WHC, Libby Laird (LL) – Maules Creek Community Representative, Michelle Henry (MH) – Narrabri Shire Council, Robyn Grover (RG) – Community Representative, Talan Breden (TB) – WHC, Robyn Grover (RG) – Community Representative

Apologies: Cllr Brett Dickinson (BD) – Narrabri Shire Council, Lyndell Crowley (LC) – Community Representative, Steve Eather (SE) – Community Representative

Independent Chair: David Ross (DR)

Independent Secretary: Debbie Corlet (DC)

Agenda Items	Who to Present
1. Welcome and Apologies	DR
2. Declaration of pecuniary or other interests	DR
3. Confirmation of the Minutes of the previous meeting – Wednesday 23 November 2022	DR
4. Business arising from the previous minutes	DR
5. Company Overview	WHC
6. Next Meeting – Wednesday 24 May 2023	ALL

Agenda Item	Discussion	Action/By Whom
1.	<p>Welcome and Apologies – DR welcomed everyone to the 1st meeting of the year.</p> <p>DR checked in with members to see how they were after many people across the State felt tired in 2022. LL – we had two weeks for writing submissions just before Christmas. Evidence of climate change now obvious.</p>	
2.	<p>Declaration of pecuniary or other interests – DR is paid a fee as chair as is DC for typing the minutes. EOH has a small bundle of WHC shares. RG has a daughter at Maules Creek.</p>	
3.	<p>Confirmation of the Minutes of the previous meeting – Members were comfortable with the notes from the site visit.</p> <p>LL – I made edits to the last meeting. Have these been incorporated? DR responded that, when edits come to him, he incorporates these generally and then the Final Draft is sent through and can be distributed to others within the community. At the following CCC meeting, the minutes are endorsed by the CCC members and then the minutes become Final.</p> <p>LL – DS did say that Mod 9 wouldn't go on Exhibition until this year, but it did. EB – I didn't know it was going on exhibition then either until it actually closed. DR – The issue comes down to who is responsible for the decision.</p>	
4.	<p>Business Arising from the previous minutes – Actions from previous meeting to remain – WHC to invite Scott Mitchell to present on tyre management at the next Joint CCC meeting.</p> <p>DR – Was to distribute the Revised Guidelines two weeks prior to these meetings but they aren't finalised by the Department as yet. Will be ready for the next round of meetings and will be discussed then.</p>	<p>ACTION 1 – WHC to invite SM to Joint CCC.</p> <p>ACTION 2 – DR to distribute Revised Guidelines before next meeting.</p>
5.	<p>Company Overview</p> <p>Report & Overview of Activities – TB observed that MCC have delivered excellent safety performance in H1 and expect to deliver another strong year as the mine recovers from the impacts of localised flooding in the region (access to MCC was cut off for 24 days in H1). H1 Maules Creek Coal FY23 Managed ROM Coal Production is 3.9Mt. FY23 Maules Creek Coal Market Guidance is 10.3 – 11.0Mt.</p>	

Health and Safety

COVID 19 – TB observed that MCC remains committed to reducing the impact of COVID-19. We continue to monitor and follow the medical guidance and legislation.

LL – Can workers come to work if they are asymptomatic? TB – Yes but must wear a mask and isolate as much as possible. If they have any symptoms like brain fog, headache etc, they are to stay at home, as per the NSW Health directive.

TB described other key health and safety programs. These include: deploying an educational campaign over the holiday season to focus on mental and physical wellbeing as part of Complete Miner Program; and continuing with their focus on reducing PL4+ hazards in the workplace through education and intervention. (PL means Potential Level 4+ looking for anything that could cause harm or cause a fatality).

EB then presented on environmental monitoring over the course of the past quarter.

Depositional Dust – The annual reporting period remained below the relevant project Approval (PA 10_0138) criteria of 4g/m²/month for the respective monitoring points.

High Volume Air Sampler – The HVAS monitor, located on ‘Olivedene’, had no exceedances recorded. The Rolling Annual Average was recorded at **7.5 µg/m³** (Annual Average Guideline of 30 µg/m³).

TEOM (PM10) – Annual Rolling average for TEOM 1 is 5.1 µg/m³ at 31 December 2022 (criteria 30µg/m³).

Biodiversity Management

Feral Animal Management – A control program will be taking place at MCC from 6 Feb until 10 Mar, targeting feral pigs, goats, cats, and foxes. Most recent routine control program (October to December 2022) results were: 493 out of total 798 pigs trapped or baited were from the Maules Offset properties. 20 out of total 25 Canid Pest Ejectors (1080) consumed were from the Maules Offsets properties. 136 goats were captured from the Maules Offsets properties.

Weed Control – Spraying of Spring growing broadleaf weeds like Thistles, Turnipweed, Patterson’s Curse and St Johns Wort has been completed. Targeted weed control for Prickly Pear, Boxthorn, Fleabane and Coolatai Grass is ongoing.

Upcoming Biodiversity Projects and Works – Continued seasonal pest animal and weed control programs. Seasonal tree planting and seeding revegetation program. Plan for upcoming ecological burn program. Continue heritage and ecology assessments. Continued fencing / maintenance works.

Modification 9 – BOS and ETL – EB gave an update on the modification’s progress. The Modification Report was placed on public exhibition in December 2022 by DPE. A Response to Submissions (RtS) report will be provided to DPE responding to agency, organisation, and individual submissions. This will be publicly available. There were a total of nine

	<p>submissions received; 2 comments/recommendations from agencies, 4 organisations (3 objections and 1 comment), and 2 individuals (1 support and 1 objection).</p> <p>AHS Project Works – The AHS system at Maules Creek has expanded to two excavator fleets, with a total of 20-24 trucks operating at any one time. To accommodate for the extra autonomous fleet, there have been significant training requirements undertaken. On each operational crew, there is now a minimum of 30 people trained.</p> <p>Community – JS described WHC’s sponsorship and donation activities over the past quarter. Over \$80,815 was spent in the local community over the last quarter. More information on Sponsorships and Donations can be found at http://whitehavencoal.com.au/sustainability/community/donations-sponsorships/.</p> <p>EOH – Asked how much clearing would take place this year in the forest. EB – Around 37 hectares. The clearing will start next week. MCCM have until the end of April to complete. Could change between now and the end of program.</p> <p>DR – Have there been impacts of flooding on planting? EB – Yes it did affect it. We are hoping to catch up in March when it cools off a bit. Need more rain again and a bit of moisture. If not, we’ll start again in October.</p> <p>In response to an earlier discussion about Mod 9, EB read what the November minutes had recorded: “DS – This is more an administration Mod, however it will go on exhibition. That means the community will get time to make a submission on it. DR: Next year for exhibition? DS: Well not sure. If it goes on earlier, it will have an extended exhibition period due to Christmas holidays.”</p> <p>LL – WHC made an active decision and the Department responded? EB – We started the Modification early last year. MH – It’s not something that WHC would have control over. They would have lodged the modification, and the Department would have set the timeframes. DR agreed with this.</p>	
6.	<p>General Business</p> <p>EOH – Observed that, at the last round of CCC meetings there was discussion about attracting new members to the CCC. There was discussion from some that the mines are doing a good job and consequently, community members don’t feel the need to join. That is not her sense and believes that there are a couple of good reasons that need to be looked at very carefully as to why the community aren’t coming along. These include:</p> <ol style="list-style-type: none"> 1. The “Lock the Gate Shame File” that drew attention to penalties since 2014, including recently a fine for taking 1B L of surface water without consent, the polystyrene pollution, the burying of tyres, and failing to seek consent for construction for construction of two pipelines (receiving retrospective approval) 2. WHC’s suggestion to shareholders that the company has partnered with Aboriginal Black Duck Grains to foster native grains on the mine site. She said this is not the case. 	

	<p>3. Nine cases brought by the EPA, this year, for blasts that she felt showed no consideration to environmental matters as well as not securing biodiversity offsets after 10 years for critically endangered communities.</p> <p>4. And the community learnt of the mines being exempted from a ban on PFAS via the media after Gazette publication.</p> <p>EOH - believed that of these represented untold hours of community members' time (and money) in monitoring compliance and reporting. In conclusion, community members are exhausted and have little faith that concerns will be dealt with transparently. She then finished her presentation by noting that some of the community reps would prefer to have all of the CCC meetings on the one day. People have to work, and they don't have the resources to come over two days. Couldn't we use Zoom more?</p> <p>DR – Asked for people to discuss what they have been hearing today from EOH as well as other issues. What are the key issues for you?</p> <p>MH – It is important to address the cumulative effects of the three mines. Should be done at the Joint CCC. The Environmental Management Plans and Blasting Plans need to be addressed in a cumulative fashion in the Joint CCC.</p> <p>RG – Very interesting what EOH had to say re being down on the numbers. We had a lot when I first started. A lot are now disinterested, which is rather sad. I've hardly had anyone approach me to bring something to the meeting. There's not the interest as there was at first. Everyone is busy and there's so few of us.</p> <p>EB – Re PFAS – there was an extension to the deadline for all PFAS to be removed from operations. We had an issue with supplier availability as it needs to be removed by the people who supply, given the nature of the product disposal is very strict. An extension was sought to the end of December for the remaining product to be removed. We had a few machines that still had the PFAS as part of the fire suppression system. We have received that extension and all PFAS was removed from operations by December 2022 and before that Gazette was issued. There was no PFAS in use or stored at MCCM by the end of 2023.</p> <p>EOH – It seems to be something that should come to the CCC. I would like to see independent people come in to confirm all the PFAS is all gone - so the community could be assured.</p> <p>MH – I've really appreciated the freer flowing conversation of this meeting. The member issues will always ebb and flow. The concerns being raised with Council are now more about the inland rail and the gas project. Mining is not at the forefront from my point of view.</p> <p>DR – To WHC re EOH's presentation, happy for you to reply at next meeting. He then discussed CCC membership. Hoping by May that we'll have new members. If you know of any group DR could approach, please let him know asap.</p>	<p>ACTION 3 – Everyone to think about membership possibilities.</p>
--	--	---

	<p>DR – One thing I’d like to respond to now is about having meetings in one day and meetings on Zoom. It could be influenced by the revised Guidelines, so we’ll have to wait and see but having people attending via Zoom has caused many issues previously as some have bad internet reception and there are a lot of interruptions with the flow of the meetings and people cutting in and out. We can discuss once the revised Guidelines are out. In terms of having the meetings in one day – I have challenges with this as people have different needs and schedules. Some people have to come to all of these meetings and, in May and October, there are five meetings.</p> <p>MH – Going to the site for the actual meetings is also good. Good to be in a different environment. They can get access to other guys to bring in quickly for a quick chat.</p>	
7.	<p>Next meeting date – EB – WHC to present on the rehab. Matt (from Resources Regulator) to be invited to the next CCC meeting.</p> <p>DR - Dates for the remainder of 2023:</p> <p>Wednesday 24 May and Thursday 25 May (Joint CCC) Wednesday 23 August Wednesday 25 October and Thursday 26 October (Joint CCC)</p> <p>DR – Thanked everyone.</p> <p>Next meeting will be on Wednesday 24 May 2023 at 2:00 pm at Boggabri Golf Club.</p>	ACTION 4 – EB to invite Matt to present on Rehab.

Meeting Closed: 3:58 pm

Appendix 1: Actions

Page No	Action No	Description	Date Raised
2	1	WHC to invite SM to Joint CCC to discuss tyre management	23 Nov 22
2	2	DR to distribute Revised Guidelines before next meeting	23 Nov 22
5	3	Everyone to think about membership possibilities	22 Feb 23
5	4	EB to invite Matt from RR to present on Rehab at the May meeting	22 Feb 23

Maules Creek Coal Mine Community Consultative Committee Meeting #40

Environmental Monitoring Report For the Q4 period, October – December 2022

Attended Noise Monitoring

Maules Creek Coal (MCC) engaged an independent acoustic consultant to conduct LAeq (15minutes) and LA1 (1 minute) attended noise monitoring at six monitoring locations on site.

A. LAeq, 15minute; GENERATED BY MCCM AGAINST OPERATIONAL DAY NOISE CRITERIA; OCTOBER-DECEMBER 2022.

The results show that MCCM is within EPL 20221 compliance limits, that operations did not exceed the applicable LAeq (15minute) criteria of 35dB and the EPA's Noise Policy for Industry compliance guidelines.

Table 1 – October Noise Monitoring

Location	Start Date and Time	Wind Speed m/s	Rainfall mm	Criterion dB	Criterion Applies? ¹	MCCP LAeq dB ²	Exceedance dB ³
NM1	4/10/2022 23:00	0.9	0	35	Yes	29	Nil
NM2	4/10/2022 23:45	0.3	0	39	Yes	32	Nil
NM3	5/10/2022 00:04	0.3	0	35	Yes	IA	Nil
NM4	5/10/2022 00:15	0.4	0	35	Yes	25	Nil
NM5	4/10/2022 22:18	0.5	0	35	Yes	<20	Nil
NM6	5/10/2022 00:46	0.5	0	35	Yes	<25	Nil

Notes: 1. Noise emission limits do not apply during periods of rainfall or winds greater than 3 metres per second (at a height of 10 metres).
2. Site-only LAeq,15minute attributed to MCCP, including modifying factors if applicable.
3. NA in exceedance column means criterion was not applicable due to atmospheric conditions outside those specified in project approval.

Table 2 – November Noise Monitoring

Location	Start Date and Time	Wind Speed m/s	Rainfall mm	Criterion dB	Criterion Applies? ¹	MCCP LAeq dB ²	Exceedance dB ³
NM1	10/11/2022 22:30	0.9	0.0	35	Yes	27	Nil
NM2	10/11/2022 23:30	0.8	0.0	39	Yes	<20	Nil
NM3	10/11/2022 23:51	0.5	0.0	35	Yes	<25	Nil
NM4	10/11/2022 23:00	0.3	0.0	35	Yes	<20	Nil
NM5	10/11/2022 22:00	0.5	0.0	35	Yes	IA	Nil
NM6	10/11/2022 23:56	0.6	0.0	35	Yes	IA	Nil

Notes: 1. Noise emission limits do not apply during periods of rainfall or winds greater than 3 metres per second (at a height of 10 metres).
2. Site-only LAeq,15minute attributed to MCCP, including modifying factors if applicable.
3. NA in exceedance column means criterion was not applicable due to atmospheric conditions outside those specified in project approval.

Table 3 – December Noise Monitoring

Location	Start Date and Time	Wind Speed m/s	Rainfall mm	Criterion dB	Criterion Applies? ¹	MCCP LAeq dB ²	Exceedance dB ³
NM1	20/12/2022 22:30	3.3	0.0	35	No	<20	NA
NM2	20/12/2022 23:30	2.8	0.0	39	Yes	29	Nil
NM3	20/12/2022 23:51	3.0	0.0	35	Yes	1A	Nil
NM4	20/12/2022 23:00	3.5	0.0	35	No	26	NA
NM5	20/12/2022 22:00	4.2	0.0	35	No	1A	NA
NM6	21/12/2022 0:00	3.4	0.0	35	No	<20	NA

Notes:

1. Noise emission limits do not apply during periods of rainfall or winds greater than 3 metres per second (at a height of 10 metres).
2. Site-only LAeq,15minute attributed to MCCP, including modifying factors if applicable.
3. NA in exceedance column means criterion was not applicable due to atmospheric conditions outside those specified in project approval.

B. LA1, 1minute; GENERATED BY MCC AGAINST OPERATIONAL NIGHT NOISE CRITERIA; OCTOBER - DECEMBER 2022.

MCC's EPL 20221 also has a '1 Minute - Night' criteria (LA1) that applies from 10pm to 7am Monday to Saturday & 10pm to 8am Sundays and Public Holidays. Results are shown on tables 4-6.

The results show that MCCM is within EPL 20221 compliance limits, that operations did not exceed the applicable LA1 (1minute) criteria of 45dB.

Table 4– October Noise Monitoring – Night

Location	Start Date and Time	Wind Speed m/s	Rainfall mm	Criterion dB	Criterion Applies? ¹	MCCP LA1,1min dB ²	Exceedance dB ³
NM1	4/10/2022 23:00	0.9	0	45	Yes	34	Nil
NM2	4/10/2022 23:45	0.3	0	45	Yes	35	Nil
NM3	5/10/2022 00:04	0.3	0	45	Yes	1A	Nil
NM4	5/10/2022 00:15	0.4	0	45	Yes	26	Nil
NM5	4/10/2022 22:18	0.5	0	45	Yes	<20	Nil
NM6	5/10/2022 00:46	0.5	0	45	Yes	27	Nil

- Notes:
1. Noise emission limits do not apply during periods of rainfall or winds greater than 3 metres per second (at a height of 10 metres).
 2. Site-only LA1,1minute attributed to MCCP.
 3. NA in exceedance column means criterion was not applicable due to atmospheric conditions outside those specified in project approval.

Table 5 – November Noise Monitoring – Night

Location	Start Date and Time	Wind Speed m/s	Rainfall mm	Criterion dB	Criterion Applies? ¹	MCCP L _{A1,1min} dB ²	Exceedance dB ³
NM1	10/11/2022 22:30	0.9	0.0	45	Yes	30	Nil
NM2	10/11/2022 23:30	0.8	0.0	45	Yes	25	Nil
NM3	10/11/2022 23:51	0.5	0.0	45	Yes	<25	Nil
NM4	10/11/2022 23:00	0.3	0.0	45	Yes	<20	Nil
NM5	10/11/2022 22:00	0.5	0.0	45	Yes	IA	Nil
NM6	10/11/2022 23:56	0.6	0.0	45	Yes	IA	Nil

Notes:

1. Noise emission limits do not apply during periods of rainfall or winds greater than 3 metres per second (at a height of 10 metres).
2. Site-only L_{A1,1minute} attributed to MCCP.
3. NA in exceedance column means criterion was not applicable due to atmospheric conditions outside those specified in project approval.

Table 6 – December Noise Monitoring – Night

Location	Start Date and Time	Wind Speed m/s	Rainfall mm	Criterion dB	Criterion Applies? ¹	MCCP L _{A1,1min} dB ²	Exceedance dB ³
NM1	20/12/2022 22:30	3.3	0.0	45	No	27	NA
NM2	20/12/2022 23:30	2.8	0.0	45	Yes	32	Nil
NM3	20/12/2022 23:51	3.0	0.0	45	Yes	IA	Nil
NM4	20/12/2022 23:00	3.5	0.0	45	No	30	NA
NM5	20/12/2022 22:00	4.2	0.0	45	No	IA	NA
NM6	21/12/2022 0:00	3.4	0.0	45	No	23	NA

Notes:

1. Noise emission limits do not apply during periods of rainfall or winds greater than 3 metres per second (at a height of 10 metres).
2. Site-only L_{A1,1minute} attributed to MCCP.
3. NA in exceedance column means criterion was not applicable due to atmospheric conditions outside those specified in project approval.

Wind Direction during Attended Monitoring

Wind direction data is collected from the Maule's Creek Coal Mine (MCCM) Automated Weather Station (AWS). Wind data for the duration of the attended monitoring assessment, recorded at the MCCM AWS is presented in the table below.

Table 7 - Prevailing Wind Direction

Monitoring Date	Prevailing Wind Direction
October	SE
November	SW
December	SE

Blast Monitoring

There was 25 blasts at MCCM during Q4 2022. All blast monitoring results recorded within the reporting period have complied with applicable overpressure and ground vibration limits specified in the respective approvals.

Table 8 – Blast Results Summary

Parameter	Units	Frequency	Number	Average	Max	100% Limit	Exceedance (Yes / No)
Noise	dB (Lin Peak)	All	25	92.784	106.6	120	No
Vibration	mm/s		25	0.1316	0.81	10	No

Air Quality

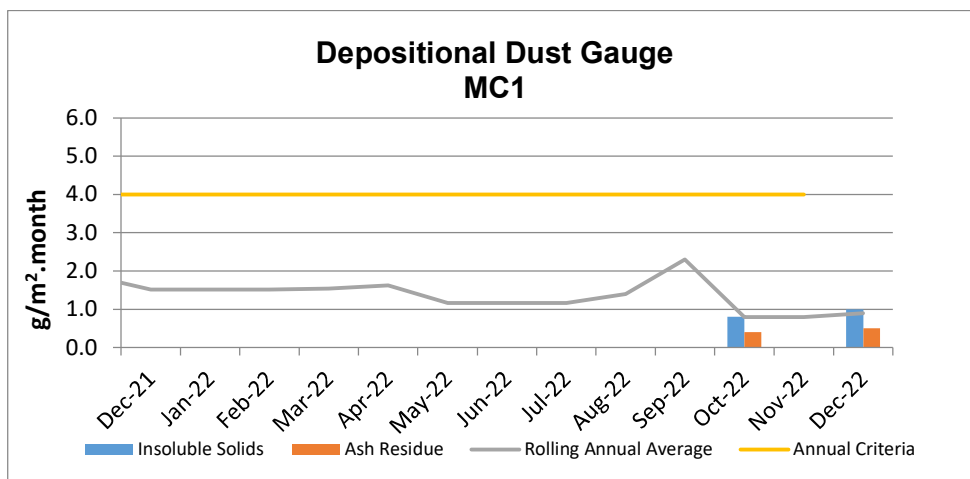
A. Total Depositional Dust

The 12 monthly rolling annual average remains below the relevant Project Approval (PA 10_0138) criteria of 4g/m²/month for the respective monitoring points.

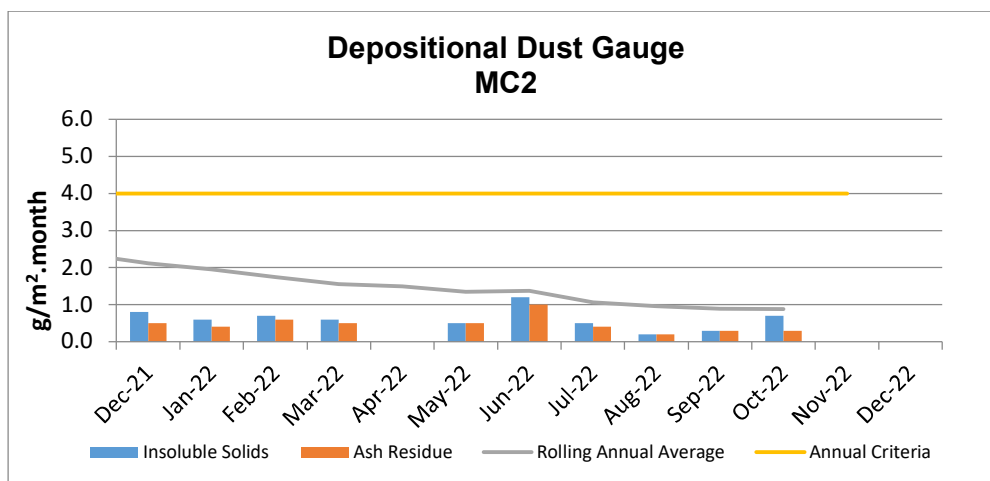
Table 9 – Deposited Dust Gauge Results [g/m²/month]

MONTH	MC1	MC2	MC3	MC4
October	0.8	0.7	5.6c	0.3
November	36.5c	0.0	6.4c	2.1
December	1.0	4.9c	1.5	0.6
12 MONTH ROLLING AVERAGE	0.9	0.5	2.1	1.2

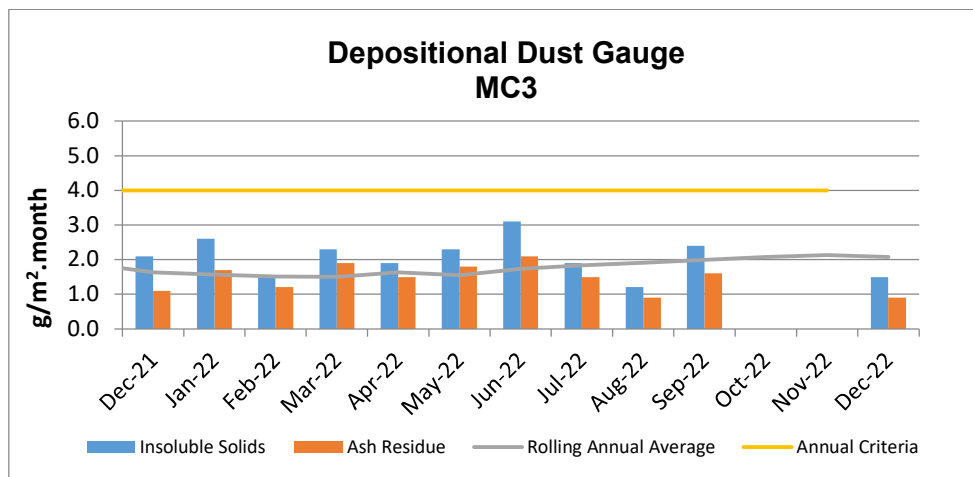
^c samples contaminated by bird dropping, decomposed insects or vegetable matter.



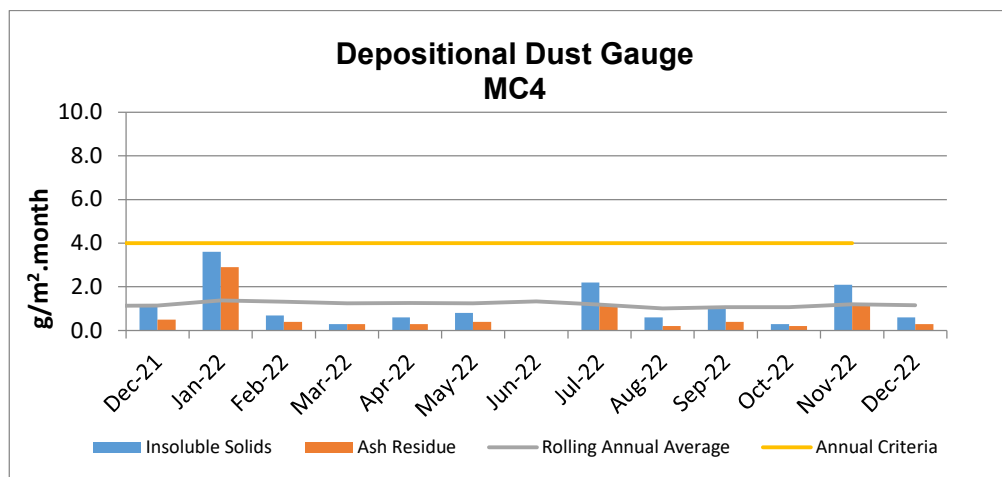
* Blank cells indicate sample periods where the sample has been contaminated and excluded from the results tables due to contaminated material (insect larvae, bird droppings, vegetation etc.).



* Blank cells indicate sample periods where the sample has been contaminated and excluded from the results tables due to contaminated material (insect larvae, bird droppings, vegetation etc.).



* Blank cells indicate sample periods where the sample has been contaminated and excluded from the results tables due to contaminated material (insect larvae, bird droppings, vegetation etc.).

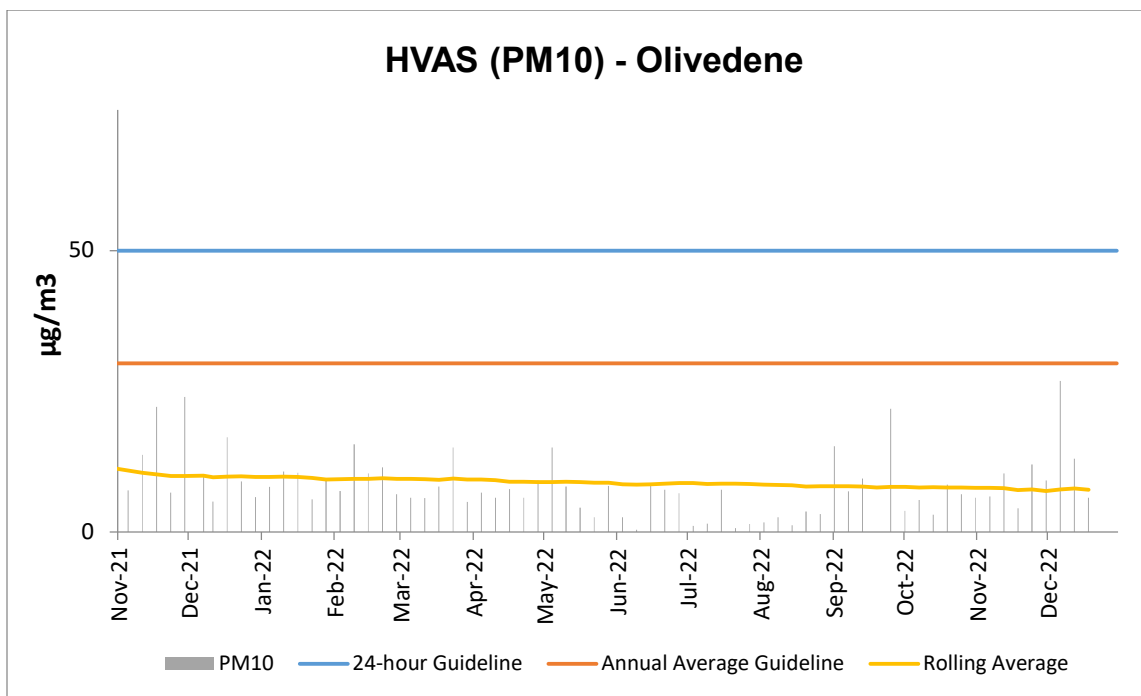


* Blank cells indicate sample periods where the sample has been contaminated and excluded from the results tables due to contaminated material (insect larvae, bird droppings, vegetation etc.).

B. High Volume Air Sampling (HVAS)

The HVAS monitor is located on the property 'Olivedene,' a mine owned property on Therribri Road. During past 12 months, there have been no exceedances of the 24-hour average of 50 $\mu\text{g}/\text{m}^3$.

HVAS PM_{10} Rolling Annual Average as of December was **7.5 $\mu\text{g}/\text{m}^3$** , which is below the Annual Average Guideline of 30 $\mu\text{g}/\text{m}^3$.



C. TEOM - PM10 Results

The annual rolling average for PM10 at the Maules Creek Coal TEOM1 was **5.1 $\mu\text{g}/\text{m}^3$** , which is below the Project Approval annual average criteria of **30 $\mu\text{g}/\text{m}^3$** as shown in the following figure. There have been no exceedances of the 24-hour average for Q4.

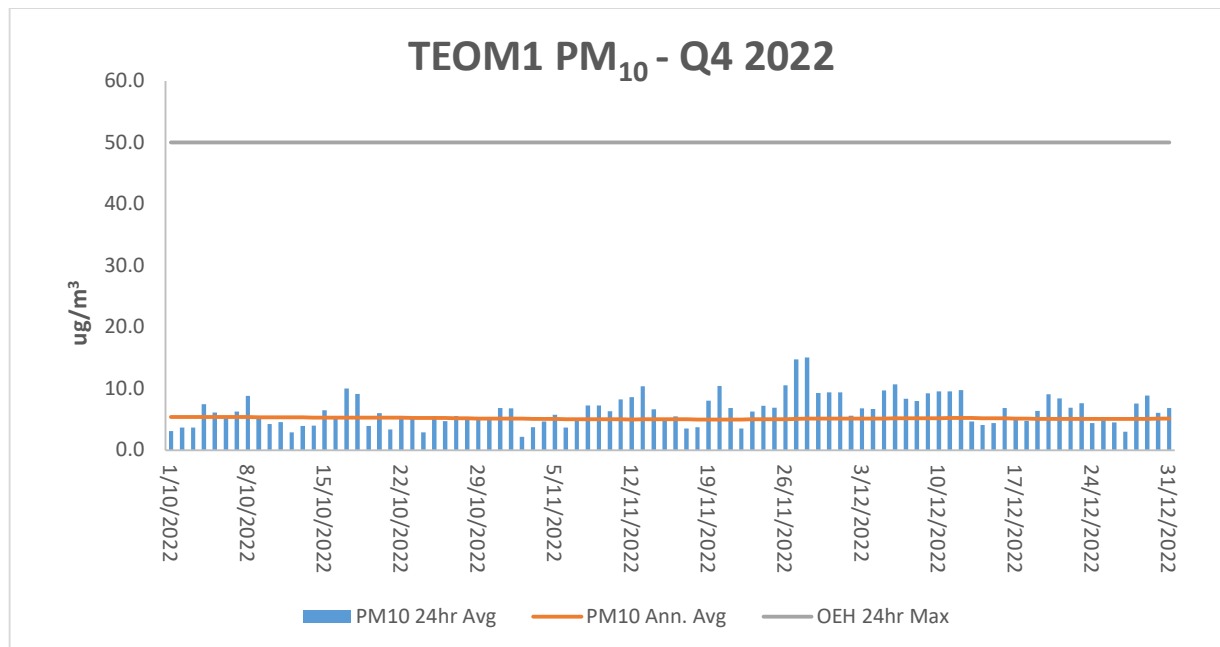


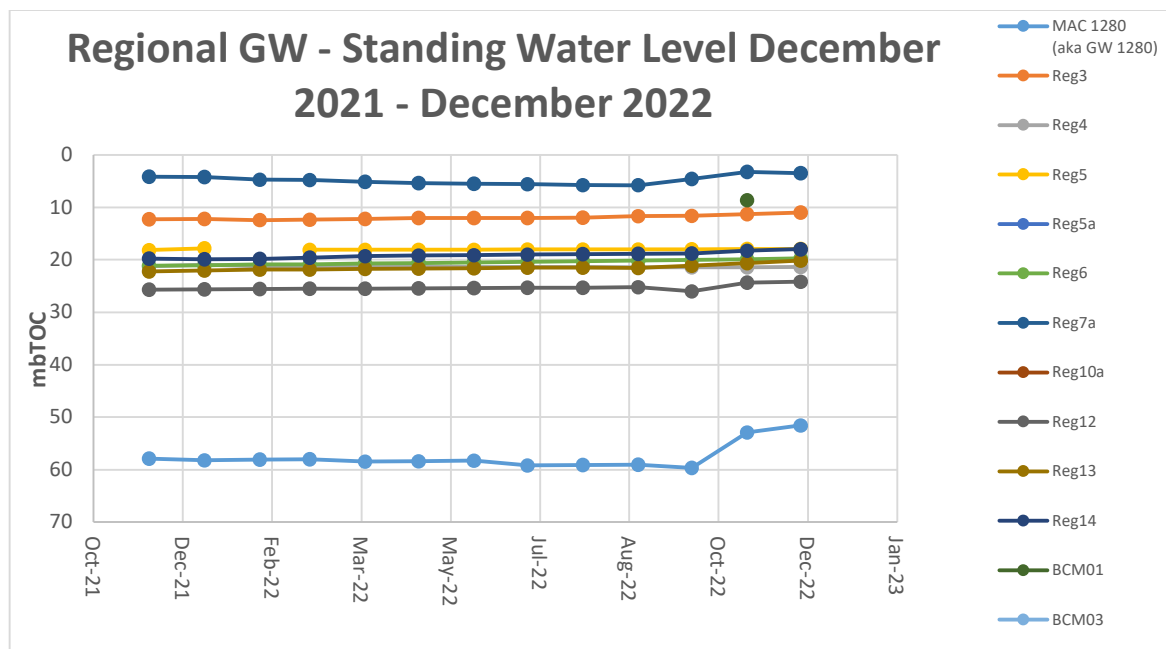
Figure 1 - TEOM Result – Particulate Matter PM_{10 $\mu\text{g}/\text{m}^3$}

* Blank columns indicate sample periods where there was either power outage, maintenance or other related causes.

Water Monitoring

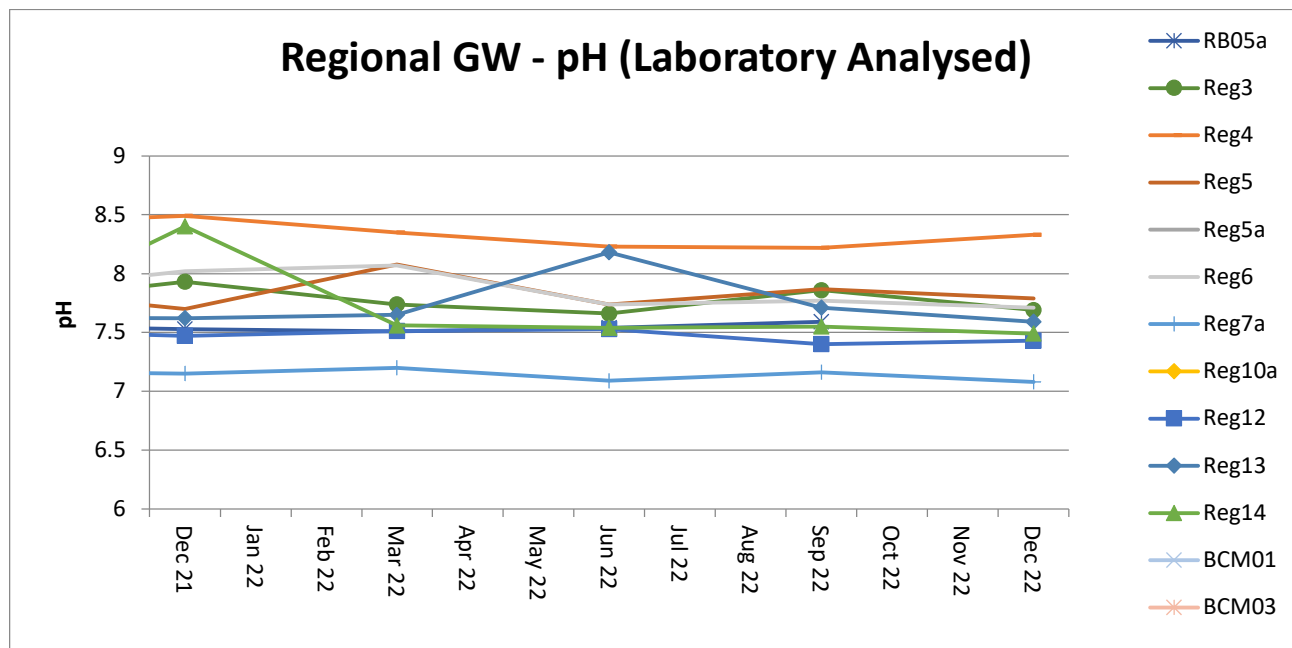
A. Groundwater

Groundwater monitoring results in open standpipe piezometers show levels to be relatively stable. The Regional bores were installed between Q4, 2013 and Q1, 2014. BCM01, BCM03, Reg10 are shallow bores which have remained dry since construction in 2013.



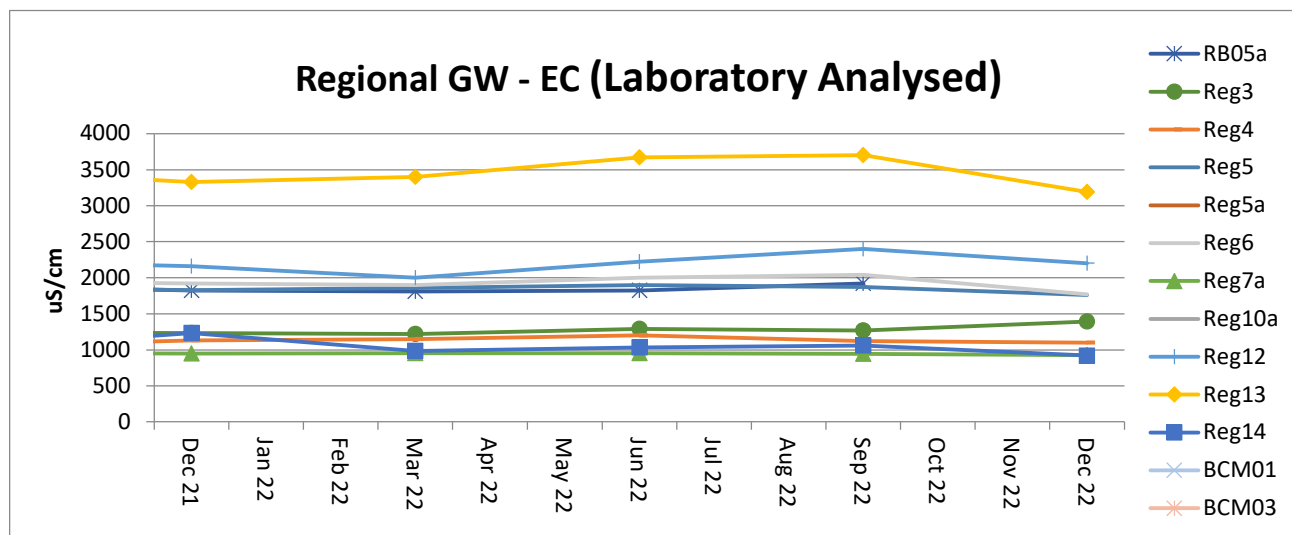
Acidity / Alkalinity (pH)

Over the past twelve months pH readings across the regional bores have remained static with very little fluctuation.



Electrical Conductivity

Laboratory Electrical Conductivity (EC) levels are all within historic groundwater EC range of 500 $\mu\text{S}/\text{cm}$ to 2,500 $\mu\text{S}/\text{cm}$, with the exception of monitoring bore Reg13 which has a historic groundwater EC range of 2,500 $\mu\text{S}/\text{cm}$ to 4,100 $\mu\text{S}/\text{cm}$. Within the last twelve months EC has remained static.

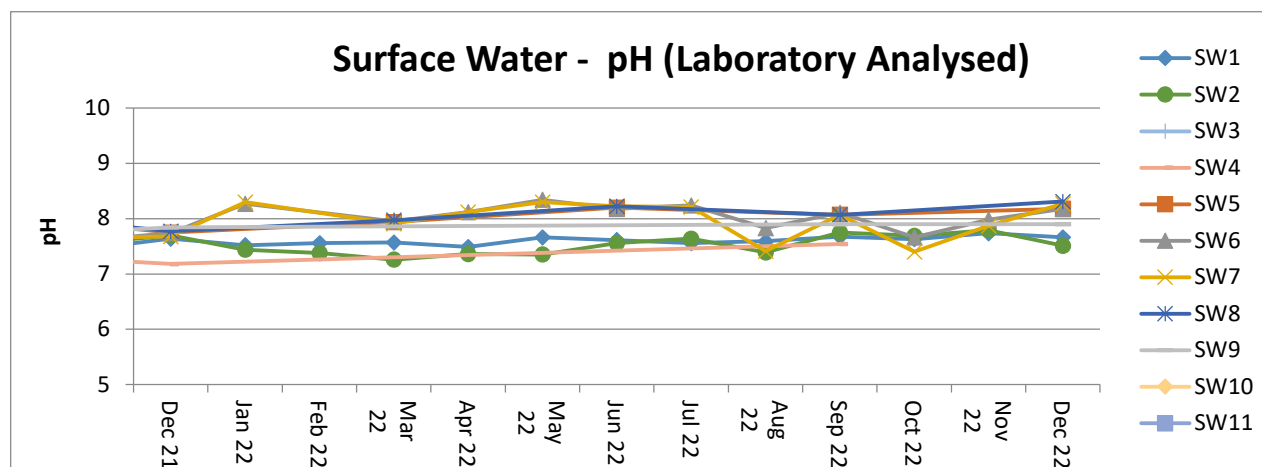


B. Surface Water – Creeks and Rivers

Routine surface water monitoring is conducted in surrounding creeks and rivers on a monthly basis. Results for parameters including pH, EC and Total Suspended Solids (TSS) are shown in the figures below.

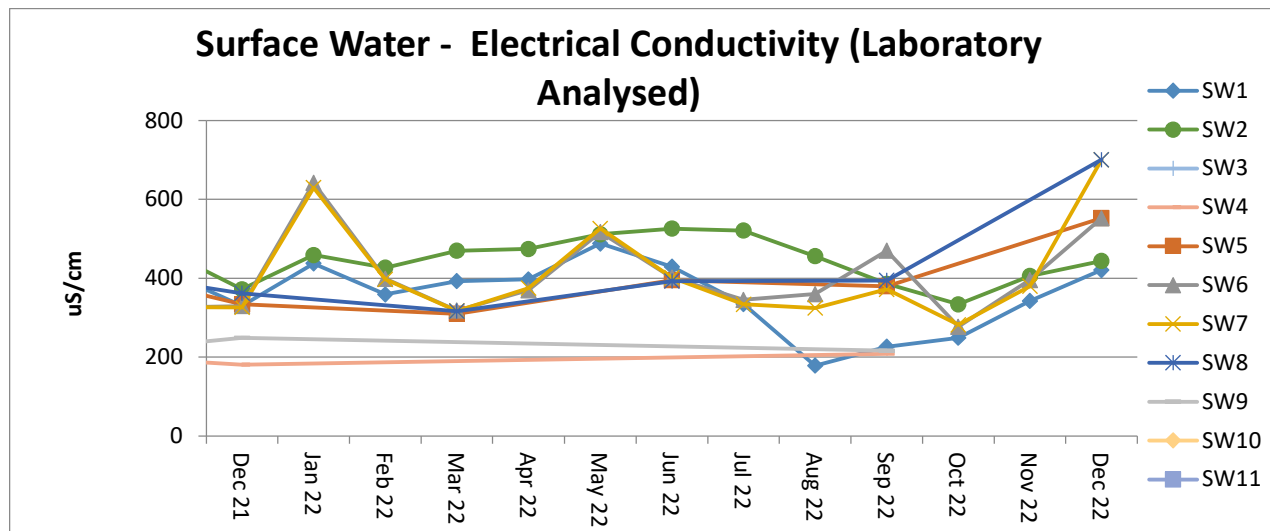
Acidity / Alkalinity (pH)

Monitoring results for pH in creeks and rivers surrounding MCCM are all trending within the ANZECC range for Irrigation, Ecosystem Health and Recreation.



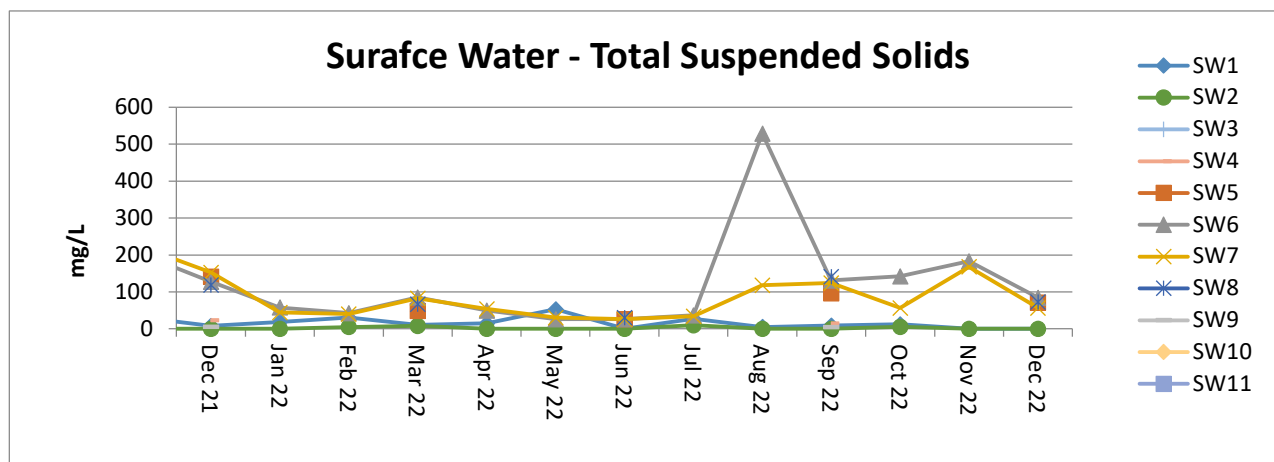
Electrical Conductivity

Surface water EC trends have remained consistent with SW5, SW6, SW7 and SW8 all historically variable. SW5, SW6, SW7 and SW8 are points along the Namoi River which are subject to regulated and variable flow regimes.



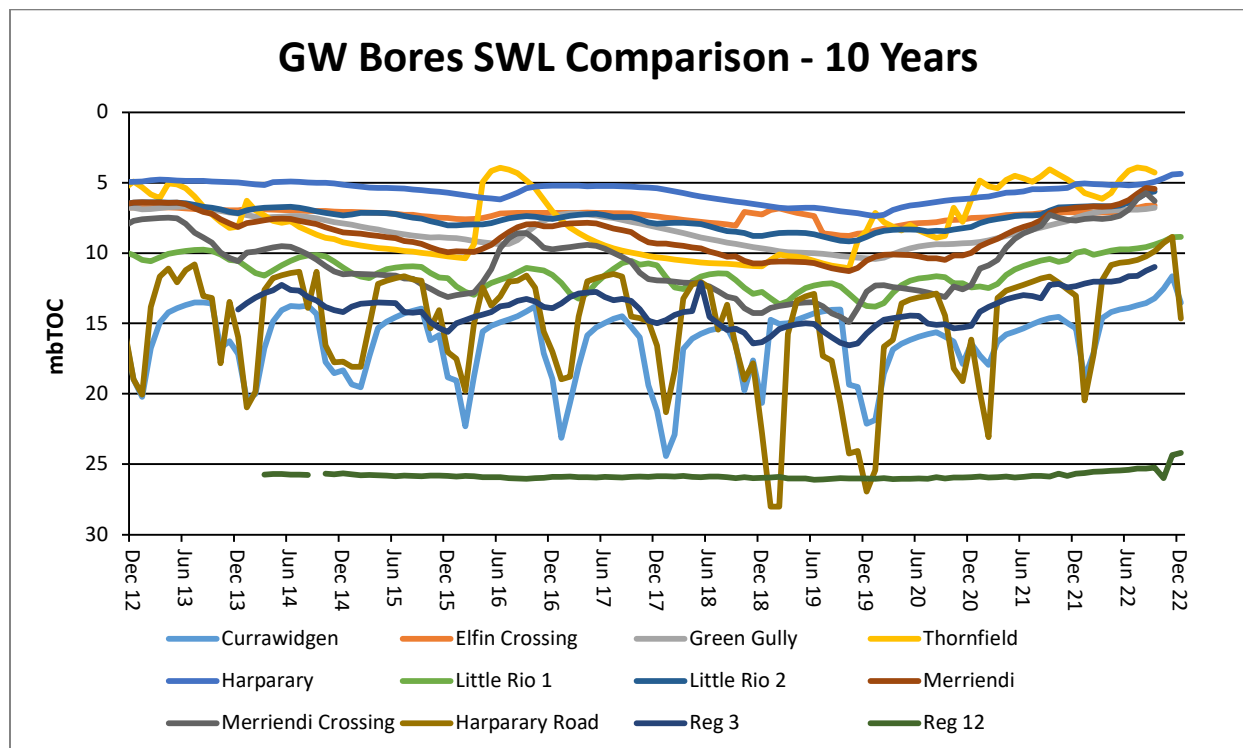
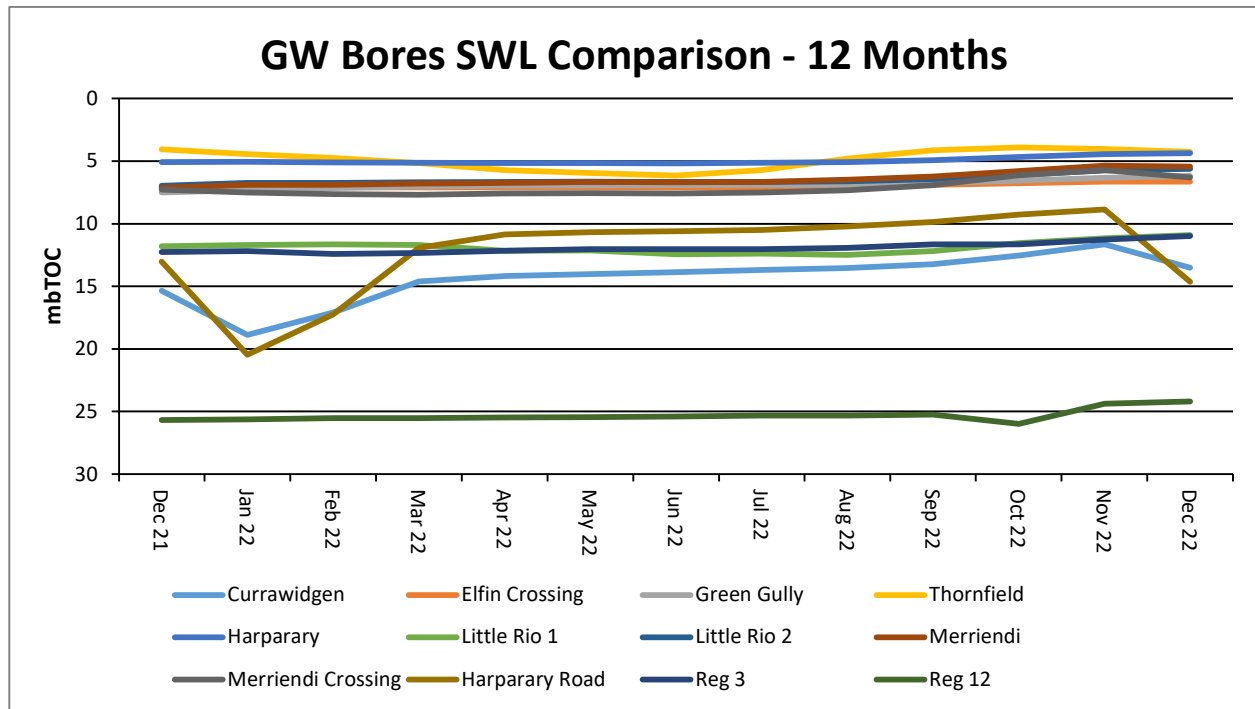
Total Suspended Solids (TSS)

Surface water TSS trends have remained generally consistent with historical results. SW5, SW6, SW7 and SW8 are historically variable as they are located along the Namoi River which is subject to regulated and variable flow regimes. The Q4 results are still recovering from the significant rainfall events in Q3, as demonstrated on the graph below.



Regional Groundwater monitoring

Maules Creek Coal Mine monitors regional bores across the region.



Rehabilitation

Progressive rehabilitation works are ongoing. MCC completed 40ha of rehabilitation during 2022.

Feral Animal Management

A feral animal control program will be taking place from the 6th of February until the 10th of March 2023 targeting feral pigs, goats, cats and foxes.

Most recent routine Whitehaven Biodiversity Feral Animal Control program (October to December 2022) results were:

- 493 out of total 798 pigs trapped or baited were from the Maules Offset properties; and,
- 20 out of total 25 Canid Pest Ejectors (1080) consumed were from the Maules Offsets properties.
- 136 Goats were captured from the Maules Offset properties.

Community Complaints

2 complaints were received during Q4 CY2022. Please refer to the Community Complaints Register on the Whitehaven Coal Maules Creek website.

Maules Creek Coal Mine

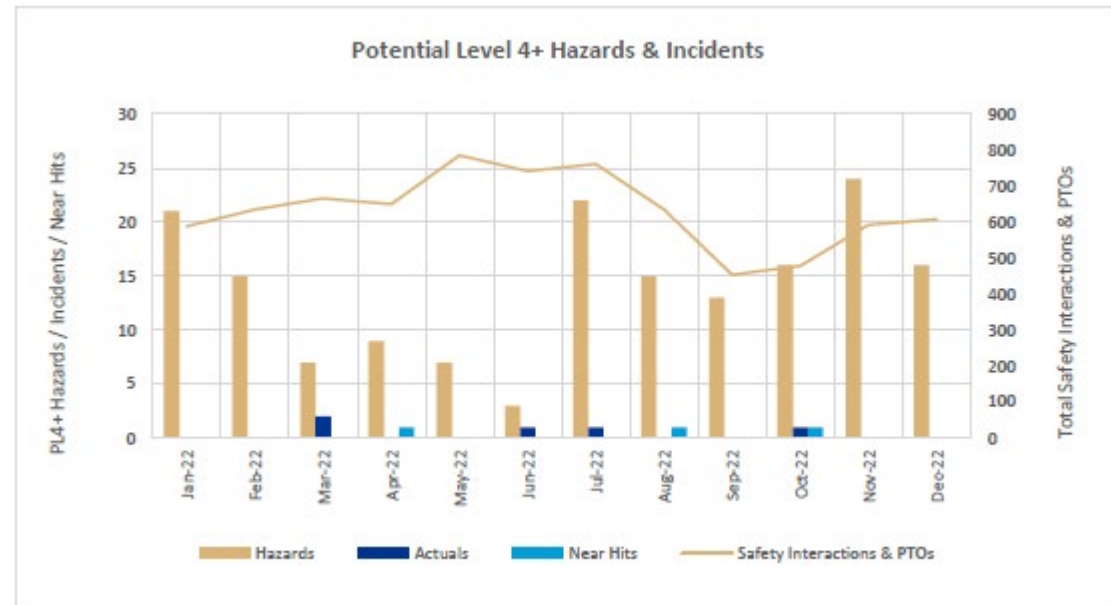
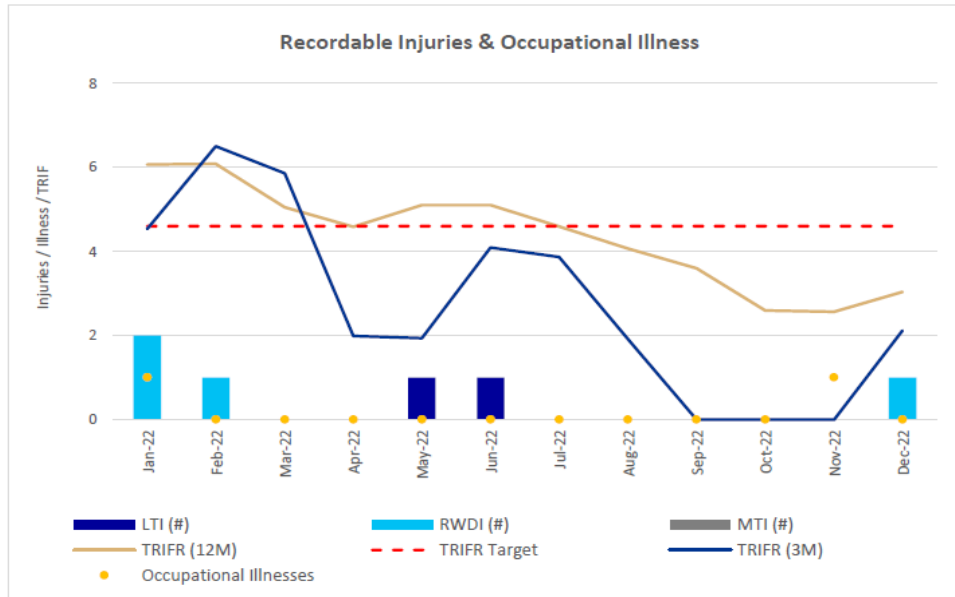
CCC MEETING
Quarter four 2022

Maules Creek Coal Mine
February 2023



Company Report and Overview of Activities

- MCC have delivered excellent safety performance in H1 with a TRFIR of 1.0 and a 12MR TRIFR of 3.0
- In FY23, we expect to deliver another strong year as we recover from the impacts of localised flooding in the region (access to MCC was cut off for 24 days in H1)
- H1 Maules Creek Coal FY23 Managed ROM Coal Production is 3.9Mt
- FY23 Maules Creek Coal Market Guidance is 10.3 – 11.0Mt



Health and safety

COVID-19

- Maules Creek Coal remains committed to reducing the impact of COVID-19. We continue to monitor and follow the medical guidance and legislation.

Holiday Season Campaign

- Whitehaven Coal deployed an educational campaign over the holiday season to focus on mental and physical wellbeing as part of our *Complete Miner* Program.

PL4 Hazard Focus

- Maules Creek Coal continues with our focus on reducing PL4+ hazards in the workplace through education and intervention.

Continuous Improvement

Maules Creek Coal continues with the review and update of our safety management system while focusing on immediate care for injuries sustained on site.

Environmental Monitoring

All data is summarised for quarter 4
in detail In the Monitoring Report
supplied

Maules Creek Coal
February 2023



WHITEHAVEN COAL

Environmental Monitoring

Q4 2022 - Air Quality Monitoring

Maules Creek Coal
February 2023



Depositional Dust

October – December 2022

The annual reporting period (12 monthly rolling annual average) remained below the relevant Project Approval (PA 10_0138) criteria of 4g/m²/month for the respective monitoring points.

MONTH	MC1	MC2	MC3	MC4
October	0.8	0.7	5.6c	0.3
November	36.5c	0.0*	6.4c	2.1
December	1.0	4.9c	1.5	0.6
12 MONTH ROLLING AVERAGE	0.9	0.5	2.1	1.2

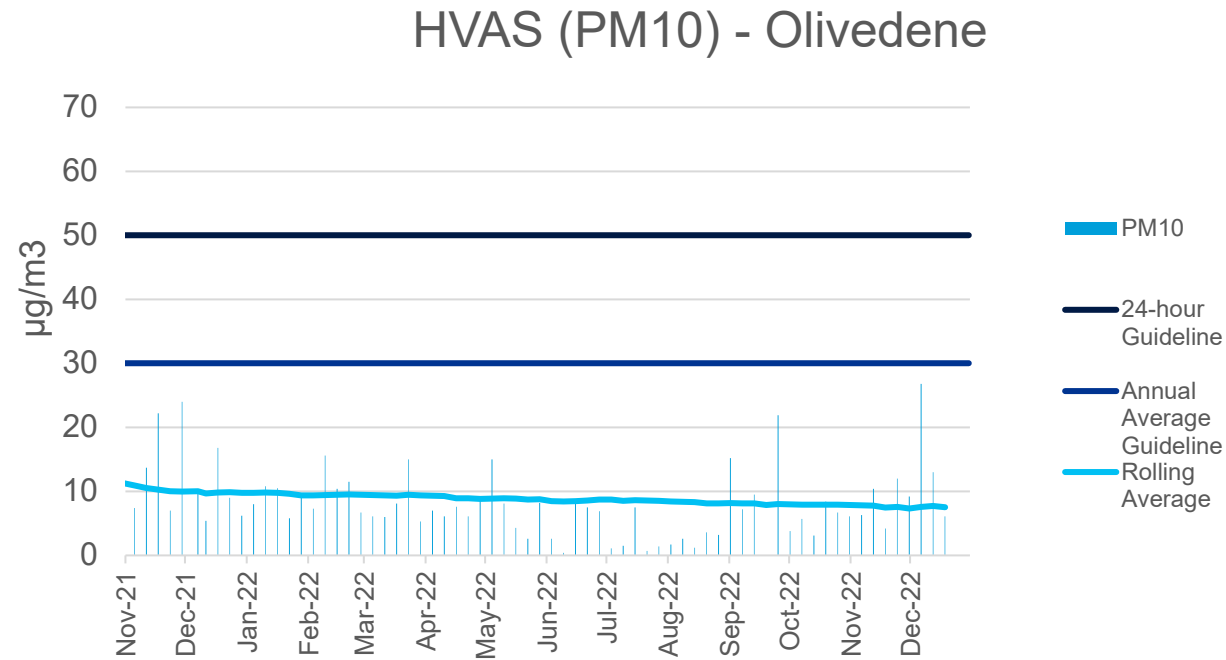
^c samples contaminated by bird dropping, decomposed insects or vegetable matter.

* Sample broken in transit.

HVAS

High Volume Air Sampler

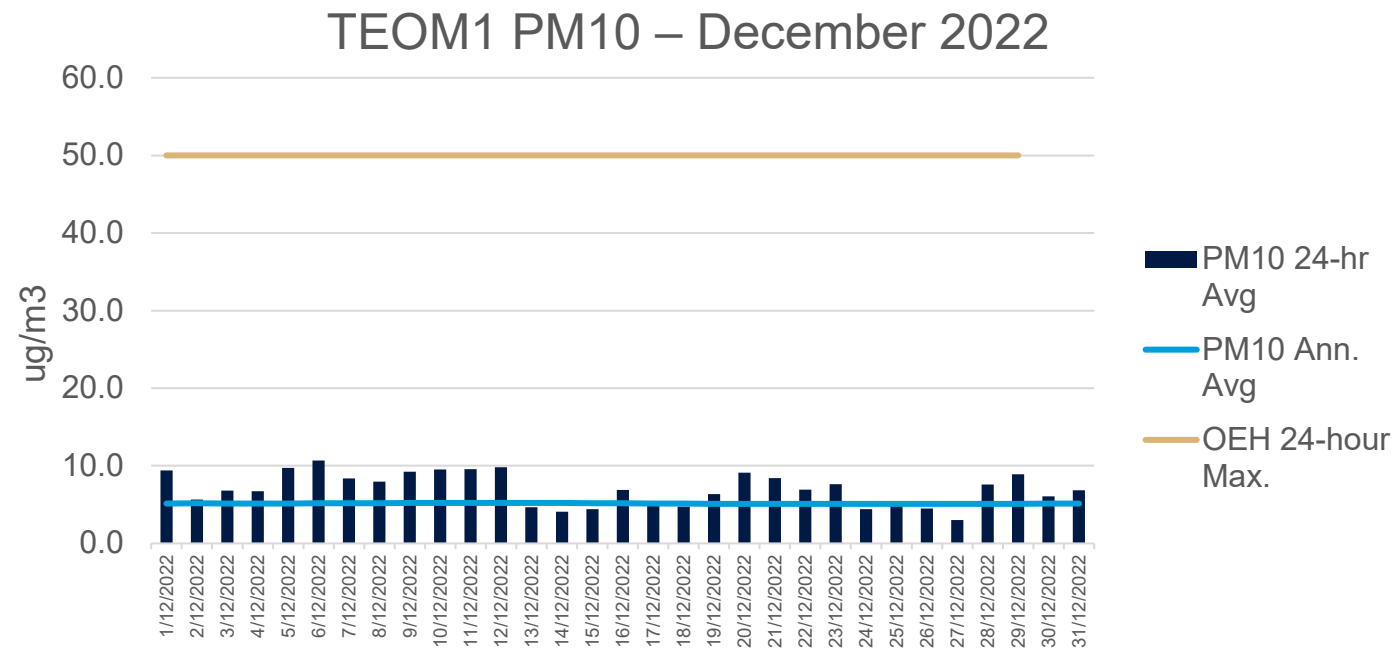
- The HVAS monitor is located on 'Olivedene'
- Data is publically available
- No exceedances recorded during the 24 hour average of 50 $\mu\text{g}/\text{m}^3$
- The Rolling Annual Average was recorded at **7.5 $\mu\text{g}/\text{m}^3$** , which is below the Annual Average Guideline of 30 $\mu\text{g}/\text{m}^3$.



TEOM (PM10)

Tapered element oscillating microbalance

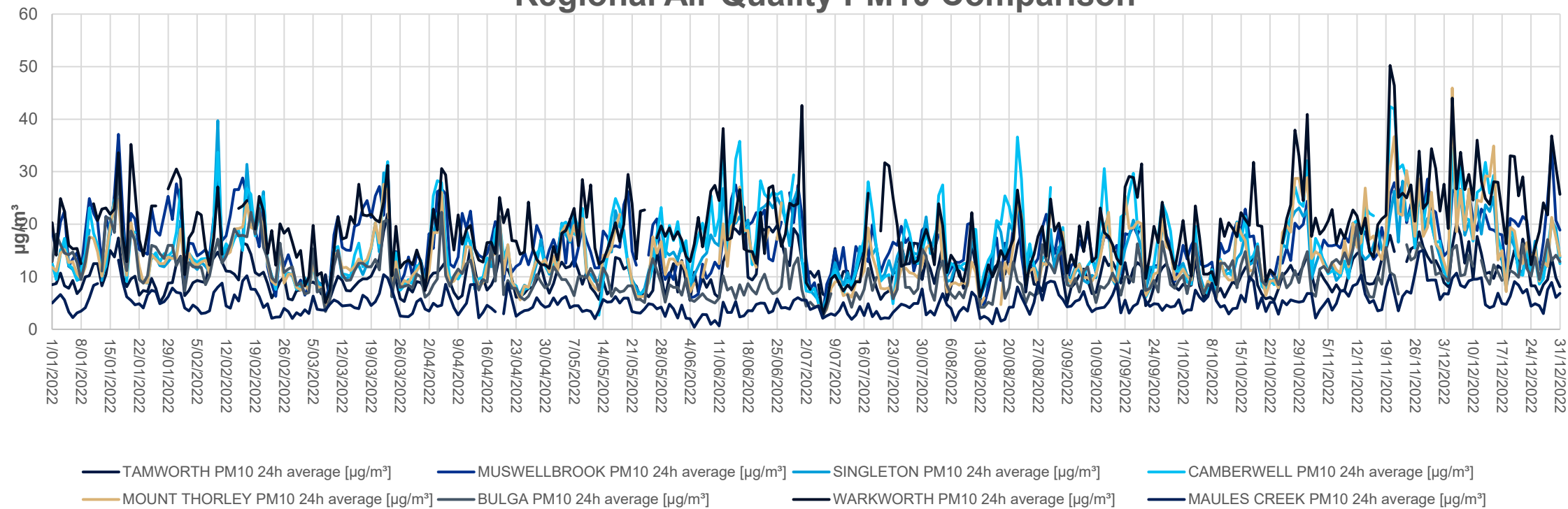
- Publicly available results of TEOM1 available on the EPA website. Annual rolling average for TEOM 1 is 5.1 $\mu\text{g}/\text{m}^3$ at 31 December 2022 (criteria 30 $\mu\text{g}/\text{m}^3$).



Air Quality Monitoring Rolling 12 Months

Annual Reporting Data 1 October 2021 – 30 September 2022

Regional Air Quality PM10 Comparison



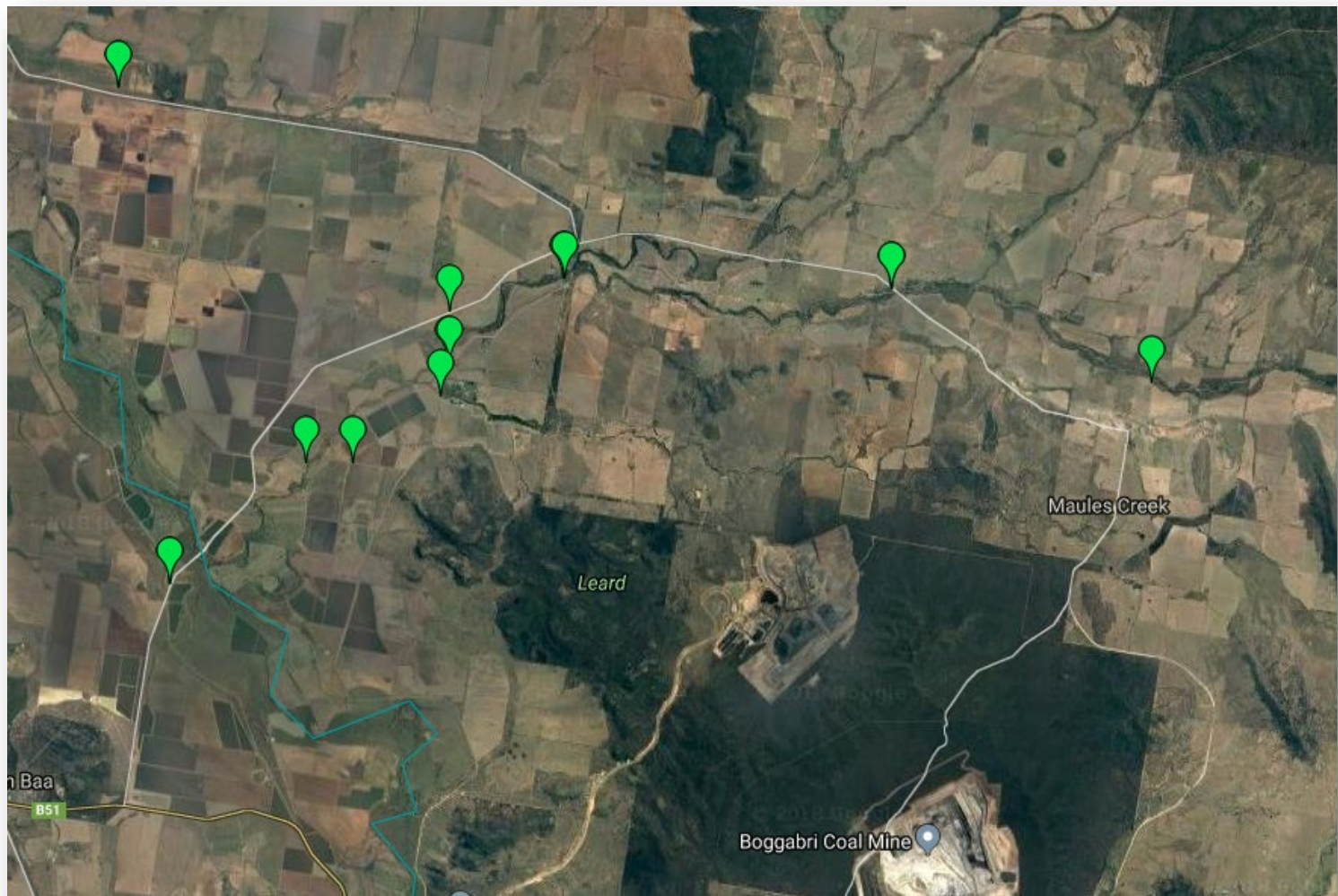
	TAMWORTH PM10	MUSWELLBROO K PM10	SINGLETON PM10	CAMBERWELL PM10	MOUNT THORLEY PM10	BULGA PM10	WARKWORTH PM10	MAULES CREEK PM10
12 monthly Annual Average	10.58	16.6	4.52	16	14.16	10.56	19.31	5.12
Max 24hr Ave	23.3	37.1	39.7	42.4	45.9	30.2	50.2	15.05

Environmental Monitoring

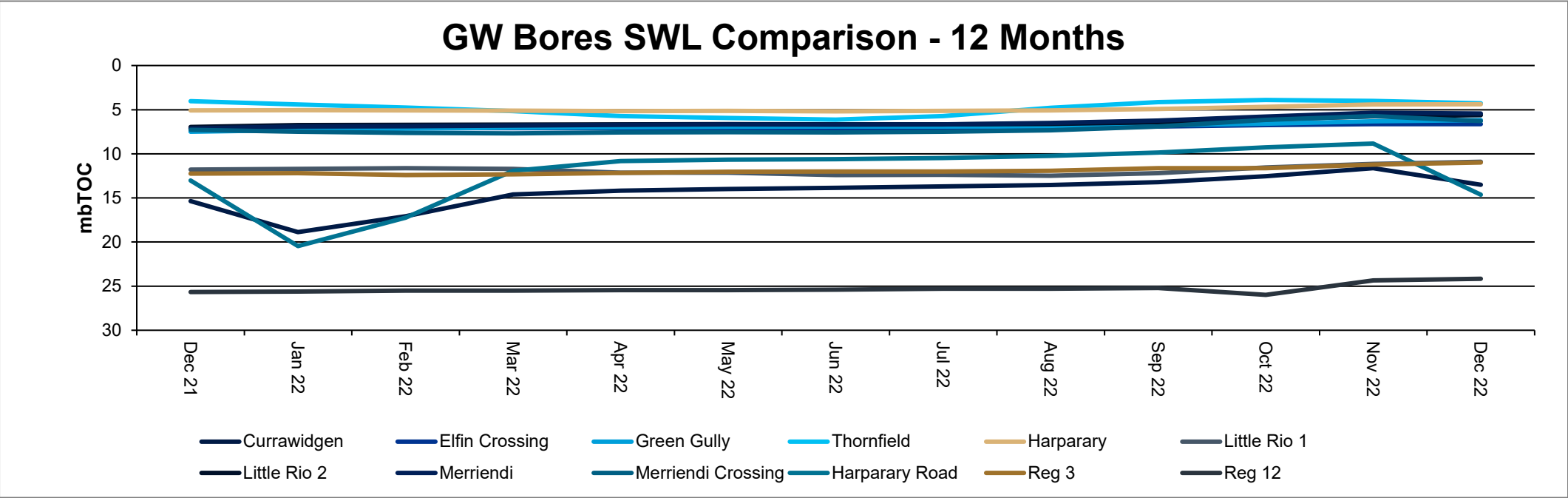
Q4 2022 - Groundwater

Maules Creek Coal Mine
February 2023

Monitoring Locations



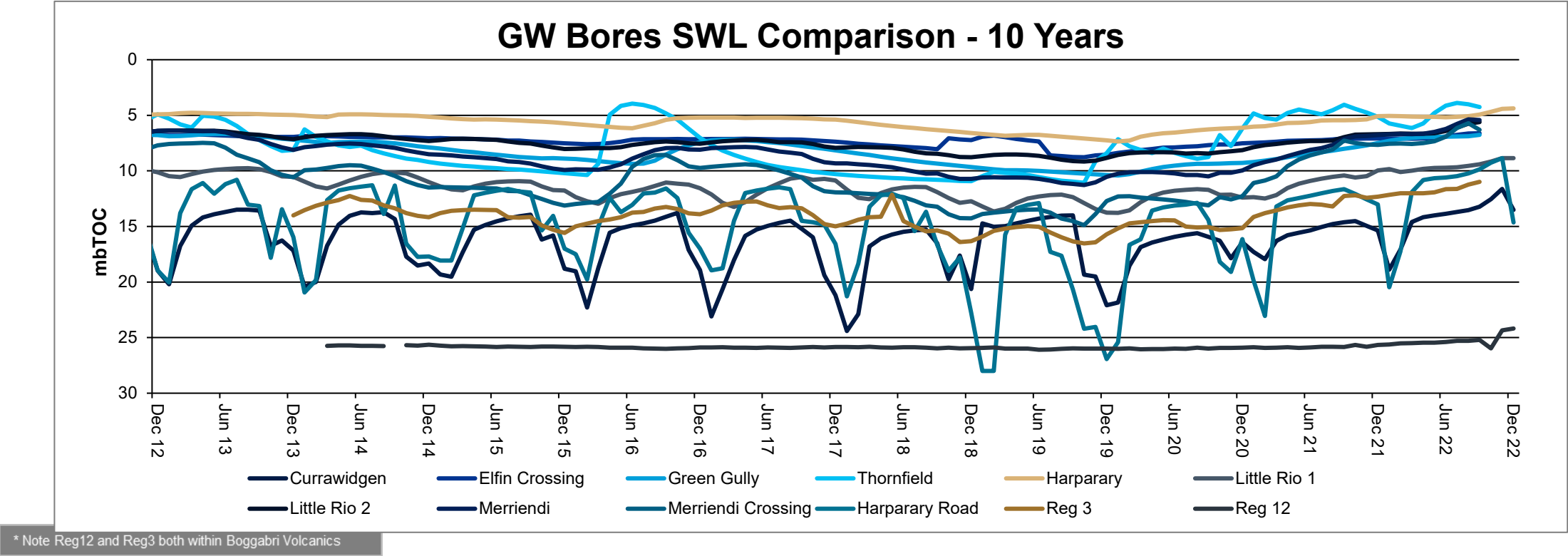
Groundwater Levels



* Note Reg12 and Reg3 both within Boggabri Volcanics

Source: NSW DPI- Water & MCCM monitoring data

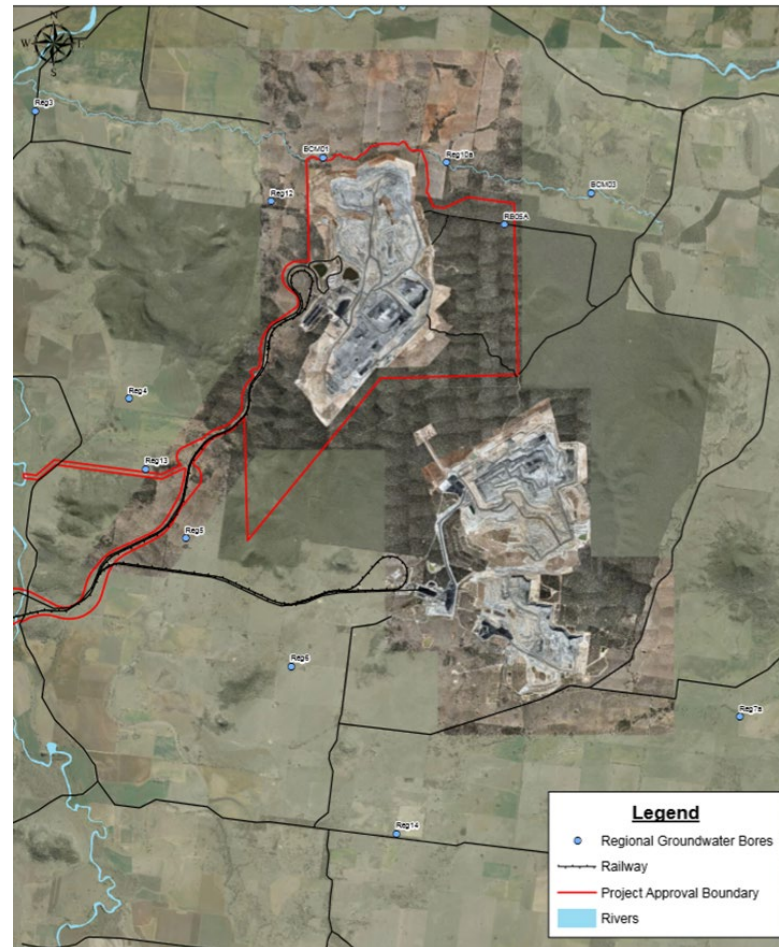
Groundwater Levels



Source: NSW DPI- Water & MCCM monitoring data

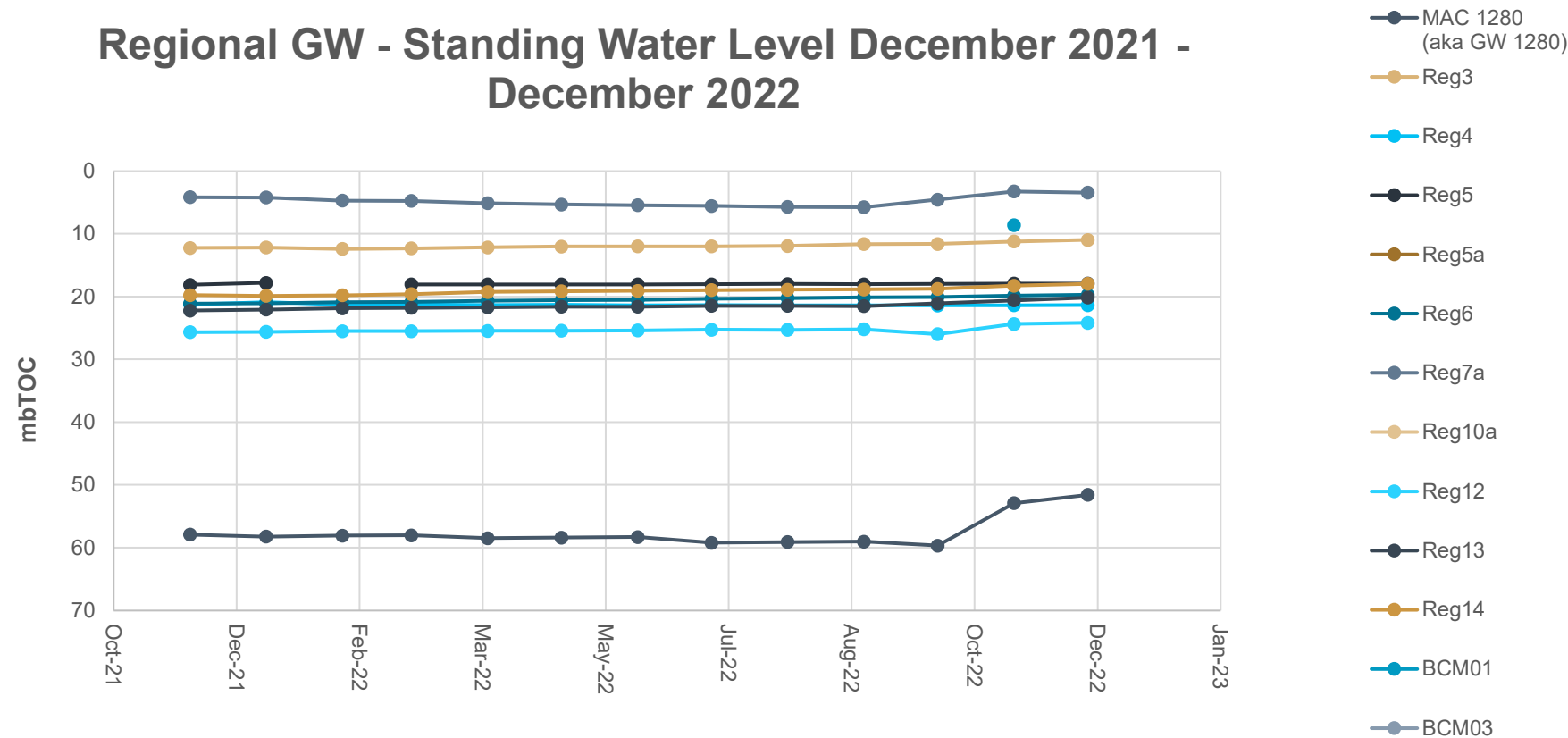
Standing Water Levels

Regional Groundwater Bores



Standing Water Levels

Regional GW - Standing Water Level December 2021 - December 2022



* Missing data due to restricted access as a result of wet weather

Environmental Monitoring

Q4 2022 - Biodiversity

Maules Creek Coal Mine
February 2023

Biodiversity Management

Feral Animal Management

A feral animal control program will be taking place at MCC from the 6th of February until the 10th of March 2023 targeting feral pigs, goats, cats and foxes.

Most recent routine Whitehaven Biodiversity Feral Animal Control program (October to December 2022) results were:

- 493 out of total 798 pigs trapped or baited were from the Maules Offset properties; and,
- 20 out of total 25 Canid Pest Ejectors (1080) consumed were from the Maules Offsets properties.
- 136 Goats were captured from the Maules Offset properties.

Weed Control

Spraying of Spring growing broadleaf weeds like Thistles, Turnipweed, Patterson's Curse and St Johns Wort has been completed. Targeted weed control for Prickly Pear, Boxthorn, Fleabane and Coolatai Grass is ongoing.

Track Maintenance & Management

Post flooding damage repairs to tracks are ongoing.



Biodiversity Management

Annual Flora and Fauna Monitoring

Spring Flora Monitoring completed despite impacts of rain and flooding on schedule.

Annual Fauna Monitoring ongoing with summer Microbat Surveys until February 2023.

Upcoming Biodiversity Projects and Works

Monthly Pest Animal Management Program January to March 2023.

Continued seasonal Weed Control Programs.

Seasonal Tree Planting and Seeding Revegetation Program.

Quarterly Threatened Flora Inspections and Programs.

Continued Fire Break Track Maintenance Program.

Plan for upcoming Ecological Burn Program.

Continue Heritage & Ecology Assessments.

Continued Fencing/Maintenance works.



Water

Maules Creek Coal Mine
February 2023

Clean Water Diversion

Discharges October – December 2022

Dam	Quantity Discharged
Highwall Dam 08	0 ML*
Highwall Dam 09	10.2 ML
Highwall Dam 10	31.9 ML
Highwall Dam 11	35.9 ML
Western Clean Water Dam	64.5 ML

* No inflows received by dam

All inflow and outflow for the dams for the quarter is publicly available at

<https://whitehavencoal.com.au/our-business/our-assets/maules-creek-mine/>

Approvals Update

Maules Creek Coal Mine
February 2023

Modification 9 – BOS and ETL

The Modification includes:

- modification of the MCCM biodiversity offset strategy to generally align the offset areas required under PA 10 0138 with the offset areas approved to meet the requirements of the EPBC Act approval (EPBC 2010/5566); and
- construction of an ETL (including poles and overhead wires) within a 20 metre (m) corridor to connect the Roma Bore pump to an existing 11 kilovolt (kV) powerline which runs approximately 700 m to the west of the Roma.
- No changes to the approved MCCM mining operation are proposed as part of the Modification.
- The Modification Report was placed on public exhibition in December 2022 by DPE
- A Response to Submissions (RtS) report will be provided to DPE responding to agency, organisation and individual submissions. This will be publicly available.
- Total 9 submissions received; 2 comments/recommendations from agencies, 4 organisations (3 objections and 1 comment), and 2 individuals (1 support and 1 objection).
- DPE will review the RtS as part of their assessment and determination of the modification application.



Autonomous Haulage System

AHS Update

Maules Creek Coal Mine
February 2023

AHS Project Works



AHS Expansion

The AHS system at Maules Creek has expanded to 2 excavator fleets, with a total of 20-24 trucks operating at any one time.

The Autonomous trucks are currently completing a 12.6km round trip haul, averaging 52 minutes per haul cycle. This is creating a large benefit for the entire operation, easing the total resourcing requirement for Maules Creek Coal.

To accommodate for the extra autonomous fleet, there have been significant training requirements undertaken. On each operational crew there is now a minimum of 30 people trained, ready to operate amongst the autonomous trucks

Old issue – Multiple A-Stops (AHS Controller applied stop to the entire circuit) would cause delays to the haul cycle and inefficiencies at the excavator.

New Features – The NIV Escort Function allows a trained and competent AHS Operator to project a 'safety bubble' over their vehicle and a NIV (Non-Instrumented Vehicle) that can then travel along a pre-determined route without stopping the entire circuit. This is a huge product improvement initiative.



Old issue – AHT (Autonomous Haul Trucks) were unable to be 'recovered' and hold their existing mission on the dig areas in AHS. This required the AHS Controller to send the truck out of the area and to a parking area, then back to the excavator, incurring a lot of unproductive time for the truck and excavator.

New Features – The System now allows the AHS to be recovered insitu and retain its current mission or assignment (under most conditions) allowing it to be reassigned directly back to the excavator. This results in less haul cycle time and more productive time for the excavator.

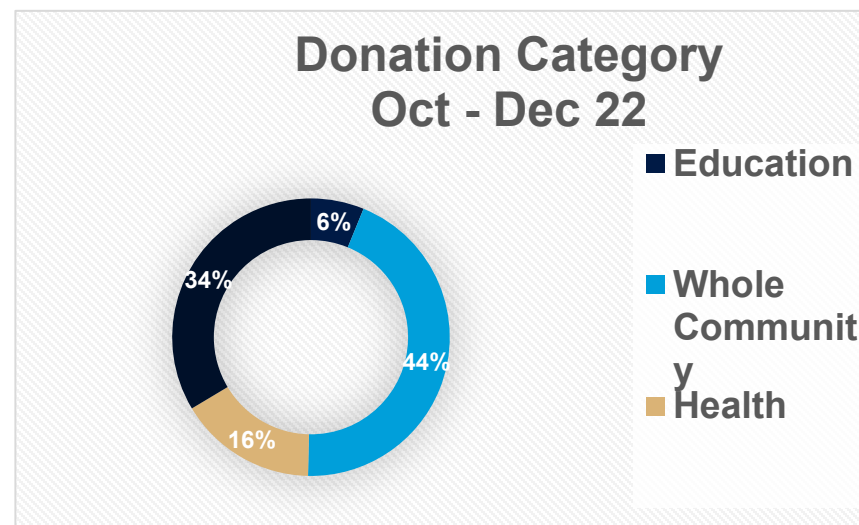
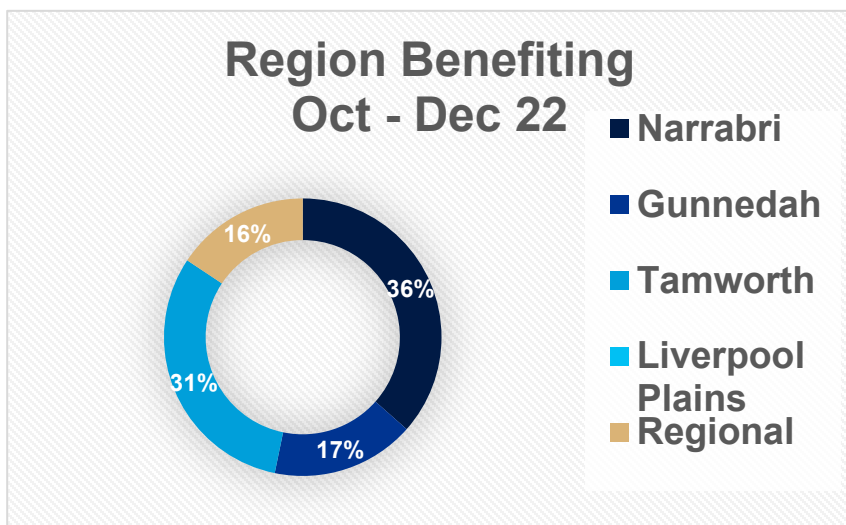
Community

Maules Creek Coal Mine
February 2023



Community

- Whitehaven continues to support the local Community with donations and sponsorships.
- More information on Sponsorships and Donations can be found at:
<https://whitehavencoal.com.au/sustainability/community/donations-sponsorships/>
- Donations for Oct – Dec 2022 over \$80,815 spent in the local community.
- Some highlights – Create 2023, Old Boys Cricket Club subsidise uniforms and training equipment, Find Hope ASIST workshops in Gunnedah Narrabri and Wee Waa, Donation to 4 girls to represent Australia at US National Futsal Championships, Narrabri town street Christmas party, Gunnedah Shire Council sponsorship of 'Week of Speed', Manilla Rugby League Football Club Sponsorship for 2023 Season, Sponsorship of Upper Horton Rodeo and Campdraft, Narrabri show.



Thank you

Maules Creek Coal Mine
February 2023

